



Ag-trivia

**How much
do you know about
Florida agriculture?**



Florida Department of Agriculture and Consumer Services

www.Florida-Agriculture.com

Play “Fresh from Florida” Ag-trivia to find out if you are an expert!



Read each multiple-choice question and try to determine the correct answer. Write down your answers on a piece of paper as you answer each question. Be sure to write the complete answer, not just the letter.

After you answer all the questions, review your answers by looking at the back of each card. Total up your correct answers when you are done.

Here's how to score your answers:

13-14 correct: You get the Florida Ag-expert award!

10-12 correct: I bet you do well in science!

7-9 correct: Not bad. But you could stand to spend summer on a farm.

4-6 correct: Uh-oh. Better brush up at our website www.Florida-Agriculture.com

2-3 correct: Did you just move here from Jupiter?

0-1 correct: Let's start at the beginning... "O is for Orange"



Ag-trivia

Which Florida fruit was called a “Love Apple” during the 18th century in France?

- A. The Tangelo**
- B. The Tomato**
- C. The Mango**
- D. The Papaya**

Answer: B

The Tomato



The tomato was termed a “pomme d’ amour,”
literally “love apple.”



Ag-trivia

Which Florida vegetable was refined by an Italian horticulturist with a connection to Special Agent 007, James Bond?

- A. Zucchini**
- B. Broccoli**
- C. Roma Tomatoes**
- D. Hungarian Hot Wax Peppers**

Answer: B

Broccoli



Broccoli was refined by a Calabrian ancestor of Albert R. “Cubby” Broccoli, the original producer of the James Bond series of movies.



Ag-trivia

If all the boxes of Florida tomatoes shipped in a recent crop year were laid end to end, they would reach from Pensacola, Florida to:

- A. Tallahassee
- B. New York City
- C. Vancouver (British Columbia)
- D. Round trip to Beijing, China

Answer: D

Round trip to Beijing, China



There were over 58.21 million cartons of Florida tomatoes shipped in a recent crop year.



Ag-trivia

All the potatoes produced in Florida during a recent crop year could:

- A. Equal the volume of the Empire State Building**
- B. Sink a battleship**
- C. Feed the Japanese National Sumo Wrestling Team for a month**
- D. Cover Rhode Island**

Answer: B

Sink a Battleship



The USS North Carolina weighs 36,600 tons. Florida's recent crop year tonnage for potatoes is 390,350 tons, more than 10.5 times the weight of a battleship.



Ag-trivia

**Florida farmers
grow enough sweet corn
for every person in Florida
to have an ear about once a:**

- A. Decade**
- B. Year**
- C. Month**
- D. Week**

Answer: D

Once a Week



Florida farmers produce about 1 billion ears of sweet corn annually, enough for every person in Florida, estimated at 18 million citizens, to have an ear weekly.



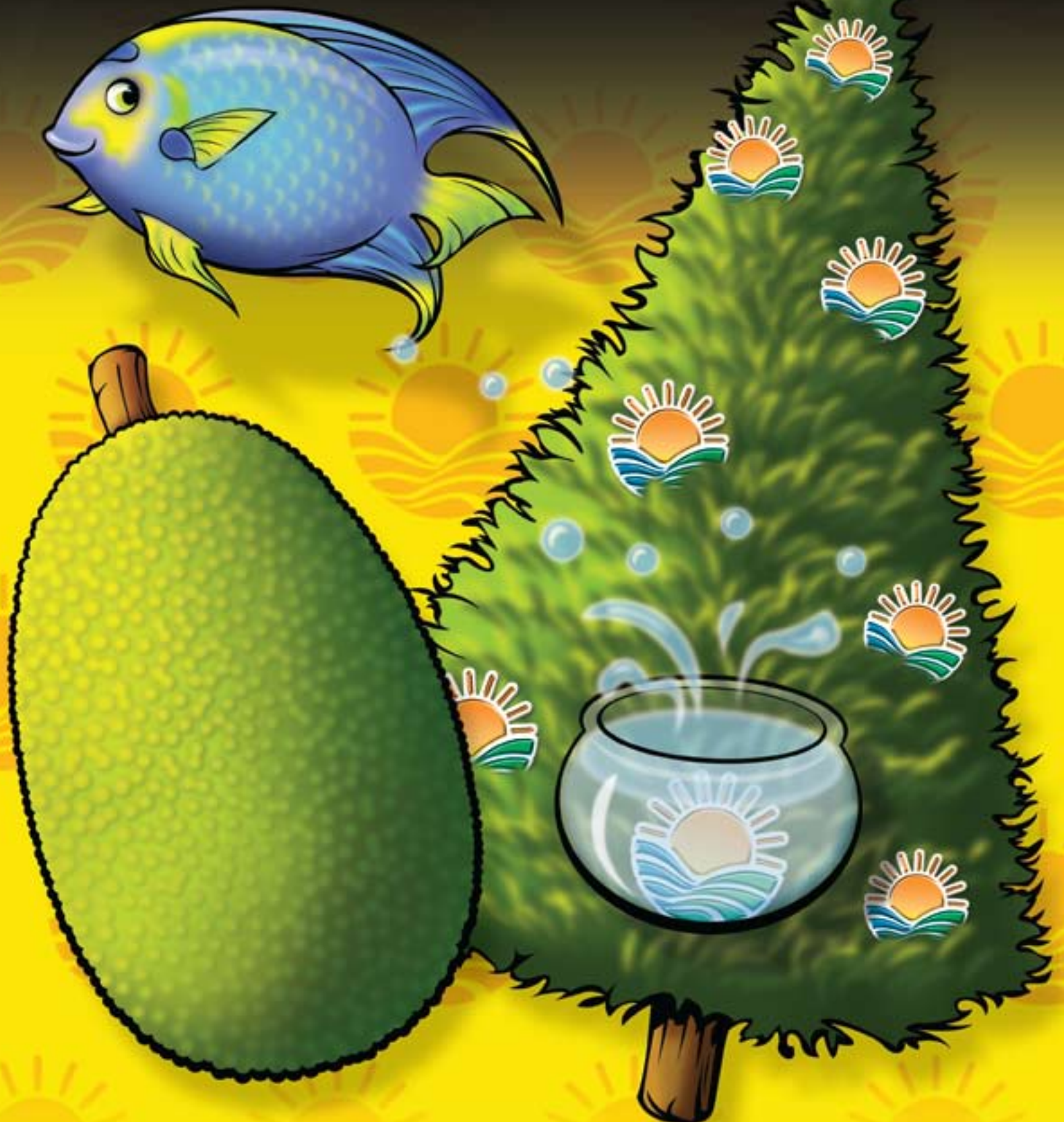
Ag-trivia

Which of the following is a Florida agricultural commodity?

- A. Christmas tree**
- B. Tropical fish**
- C. Jackfruit**
- D. All of the above**

Answer: D

All of the Above



Christmas Tree, Tropical Fish, Jackfruit



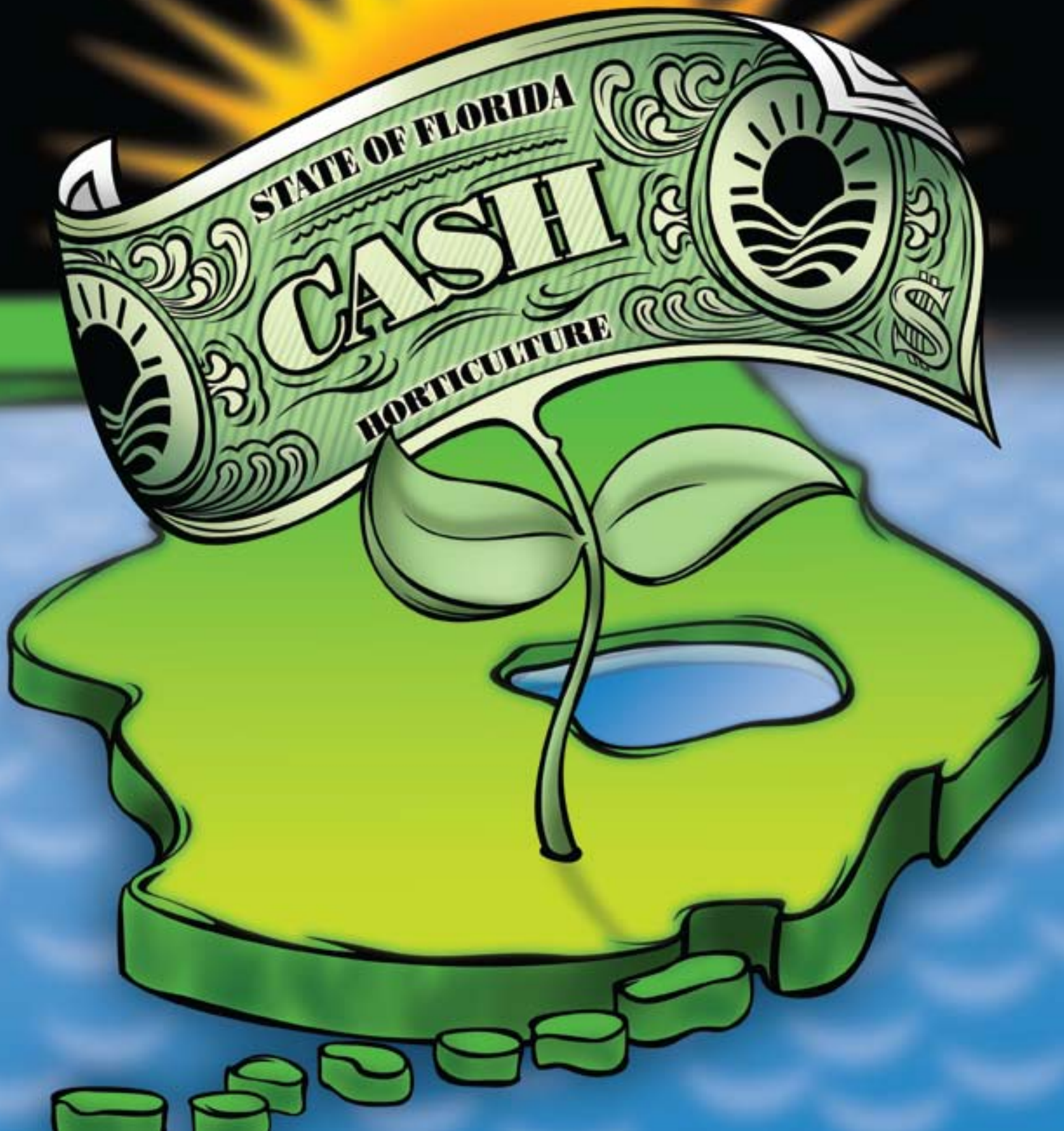
Ag-trivia

Which Florida agricultural cash crop is highest in sales?

- A. Honey**
- B. Horticulture products**
- C. Strawberries**
- D. Watermelon**

Answer: B

Horticulture Products





Ag-trivia

**Which Florida commodity
is the lowest in sales?**

- A. Strawberries**
- B. Squash**
- C. Pumpkins**
- D. Snap beans**

Answer: C

Pumpkins

High Sales



Low Sales



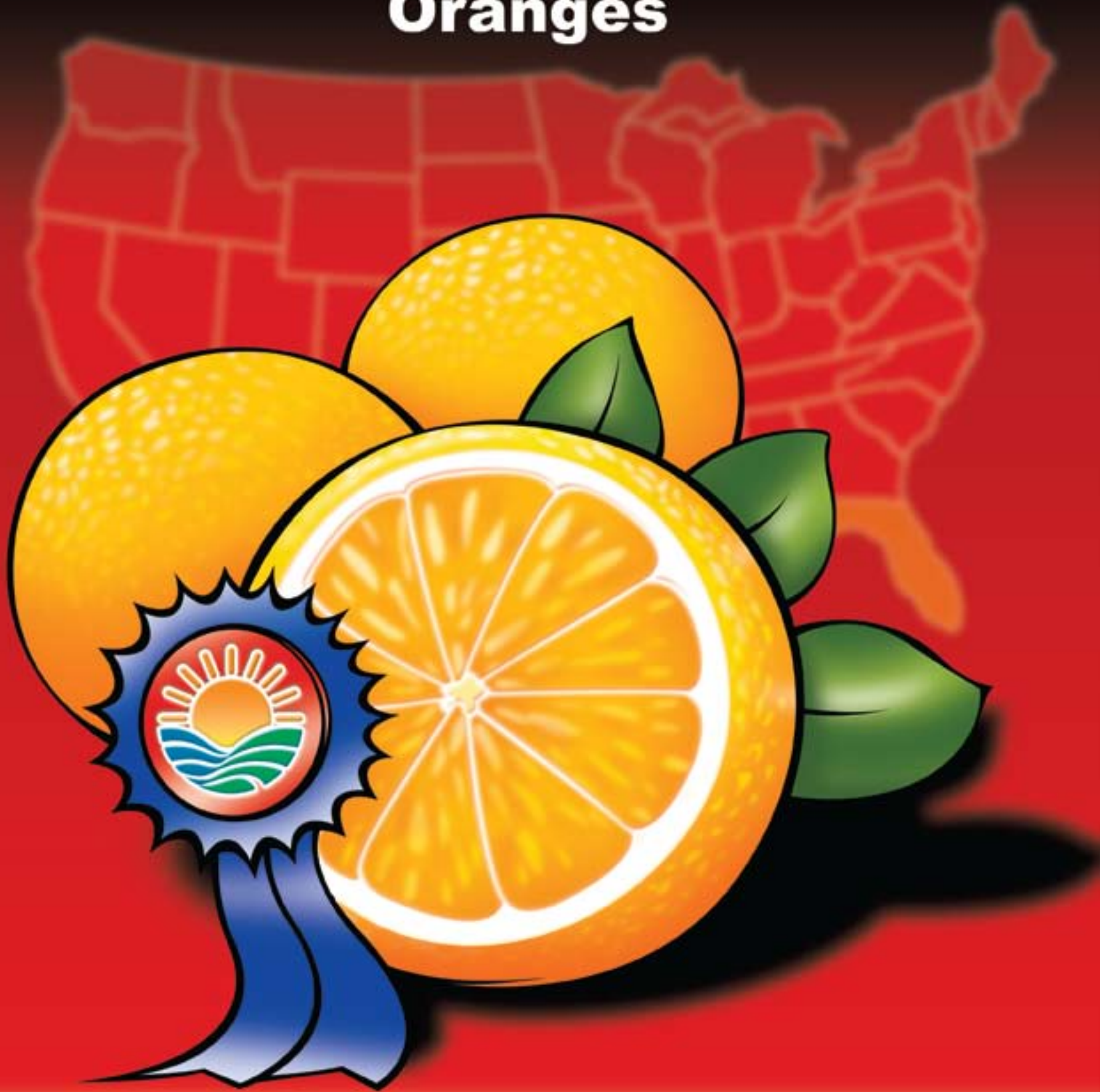
Ag-trivia

Florida leads the nation in production of which commodity?

- A. Potatoes**
- B. Grapes**
- C. Oranges**
- D. Blueberries**

Answer: C

Oranges



Florida leads the nation in the production of oranges.



Ag-trivia

**What Florida commodity
is praised for its
high level of antioxidants?**

- A. Squash**
- B. Blueberry**
- C. Cucumber**
- D. Plum**

Answer: B

Blueberry



Blueberries are praised for having high levels of antioxidants.



Ag-trivia

**Who first introduced
cattle to Florida?**

- A. Ponce De Leon**
- B. Christopher Columbus**
- C. Henry Ford**
- D. Vasco De Gama**

Answer: A

Ponce De Leon



Florida is the oldest cattle-raising state



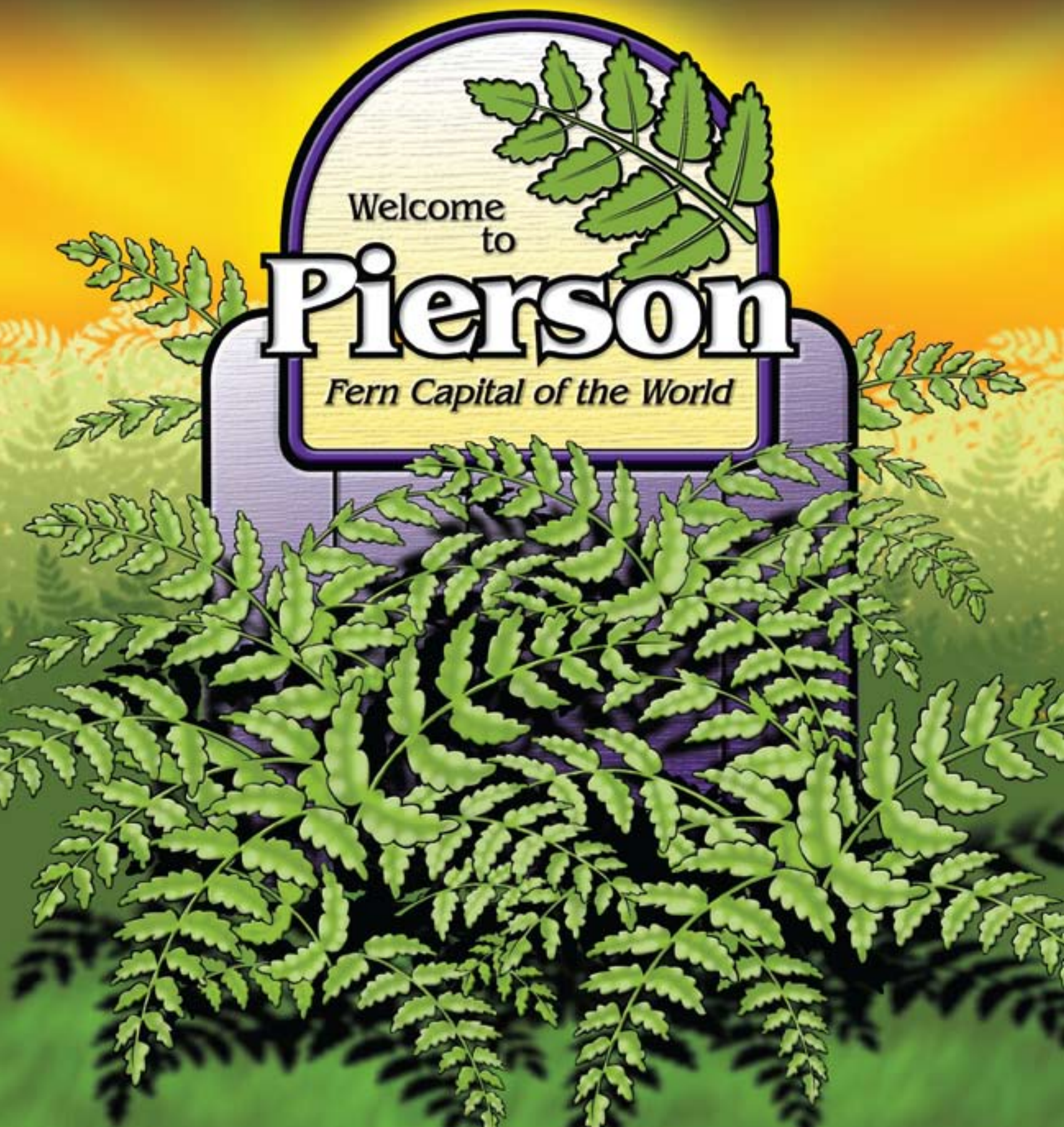
Ag-trivia

**What crop grows abundantly
in Pierson, Florida?**

- A. Blueberries**
- B. Sweet corn**
- C. Ferns**
- D. Watermelon**

Answer: C

Ferns





Ag-trivia

Which of the following is not a tropical fruit grown in Florida?

- A. Mamey Sapote
- B. Carambola
- C. Guava
- D. Mangosteen

Answer: D

Mangosteen





Ag-trivia

Florida Supersweet is a type of:

- A. Pepper**
- B. Onion**
- C. Corn**
- D. Strawberry**

Answer: C

Corn

Sweet Corn Festival



Fresh *from* Florida

